



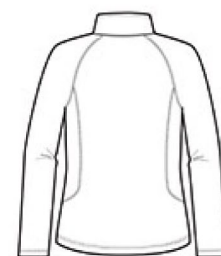
Eddie Bauer® Ladies 1/2-Zip Base Layer Fleece. EB237



This smooth-faced fleece is designed for next-to-skin comfort. Sleek and functional, it easily transitions from outdoor pursuits to everyday wear. Flat seam details. Reverse coil zipper. Open cuffs and hem. Contrast Eddie Bauer logo heat transfer on right hem. Made of 9.3-ounce, 100% polyester fleece.

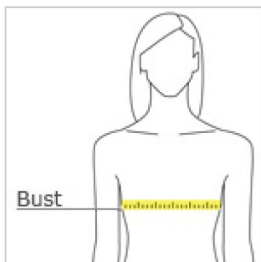


front



back

HOW TO MEASURE



BUST

With arms down at sides, measure around the upper body, under arms and around the fullest part of the bust.

SIZE CHART

| | XS | S | M | L | XL | 2XL | 3XL | 4XL |
|------|-------|-------|-------|-------|-------|-------|-------|-------|
| Size | 2 | 4/6 | 8/10 | 12/14 | 16/18 | 20/22 | 24/26 | 28/30 |
| Bust | 32-33 | 34-35 | 36-37 | 38-40 | 41-43 | 44-46 | 47-49 | 50-52 |

COLOR INFORMATION



Black
PMS NTR Black CPMS No match



Cobalt Blue



Iron Gate
PMS 7540 C